

# ***Will County* Center for Economic Development**

## ***Elected Officials Briefing***

**Tuesday July 14, 2009**

**Elected Officials Briefing**  
Tuesday, July 14, 2009

**A G E N D A**

- I. The CED Mission**
- II. The CED: A Brief History**
- III. CED Organization, Management & Funding**
- IV. Board Committees and the 2009 Work Plan**
- V. Assisting Local Community Economic Development**

## Elected Official Briefing

### CED Mission Statement

***The Mission of the Will County Center for Economic Development is to assist in the recruitment of new business, the retention and expansion of existing business and the creation of new jobs and investment within Will County.***

## **So How Do We Do This?**

***We Market Will County as a Premier Business Location***

***We Engage Leaders in the Public and Private Sectors in Fulfilling Our Mission***

***We Collect and Maintain Development Data on Will County***

***We Maintain Regular Contact With Major Employers in the County***

***We Maintain a Working Network of Economic Development Allies***

***We Actively Support Public Policies Which Further the CED's Mission***

***We Foster a Positive Culture of Economic Development Throughout the Entire County.***

## The CED: A Brief History


- **Created in 1981 as “Greater Joliet Inc. in response to Joliet’s 26.5% unemployment rate**
  - **Formed to diversify the economic base of Will County to avert another recession experienced in the early '80’s**
  - **Frank Turk considered the “Founding Father”**
  - **The first organized economic development initiative in Will County - First Year Budget: \$103,000**
- 

## The CED: A Brief History

- **In 1991 the Will County Chamber of Commerce was created to allow increased government affairs activities**
- **The City Center Partnership was formed as a committee of the CED in 1990 to lead the Renaissance of Downtown Joliet**
- **In 1993 the CED entered into a formal affiliation with the Three Rivers Manufacturers Association**


# Board Member Briefing

## The CED: Successes

- **Since 1982 the CED has raised over \$23 million to fulfill it's mission**
  - **Directly involved in the creation of over 70,000 new jobs**
  - **Responsible for coordinating the effort for new interchanges at I-55/Weber Rd. & I-80/Houboldt**
  - **Played a leadership role in the planning and the re-use of the Joliet Arsenal**
  - **Created the statewide Rivertowns Coalition to advocate on behalf of Illinois communities that host riverboat gaming in response to takeover threat from Chicago**
- 

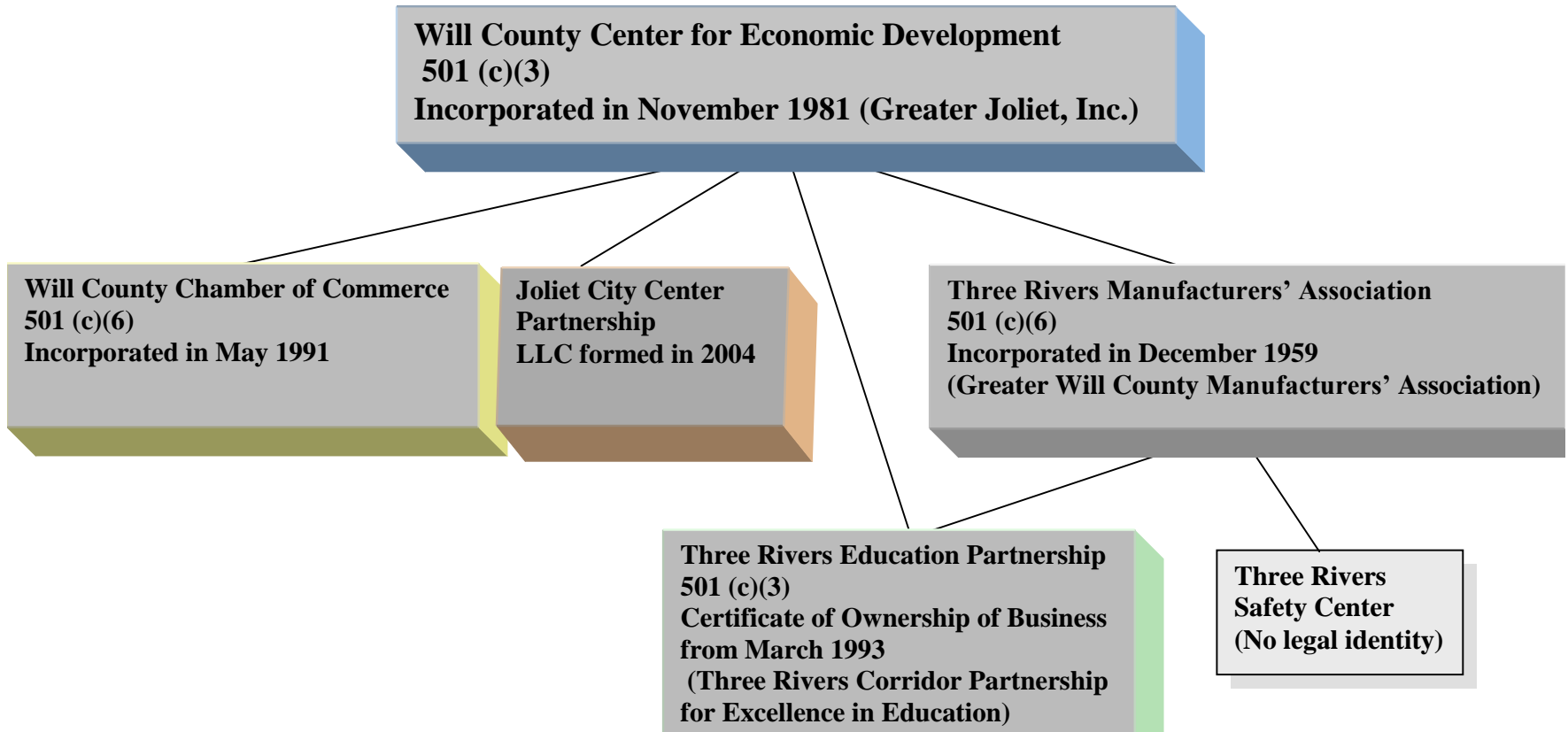
## Board Member Briefing

### The CED: Successes

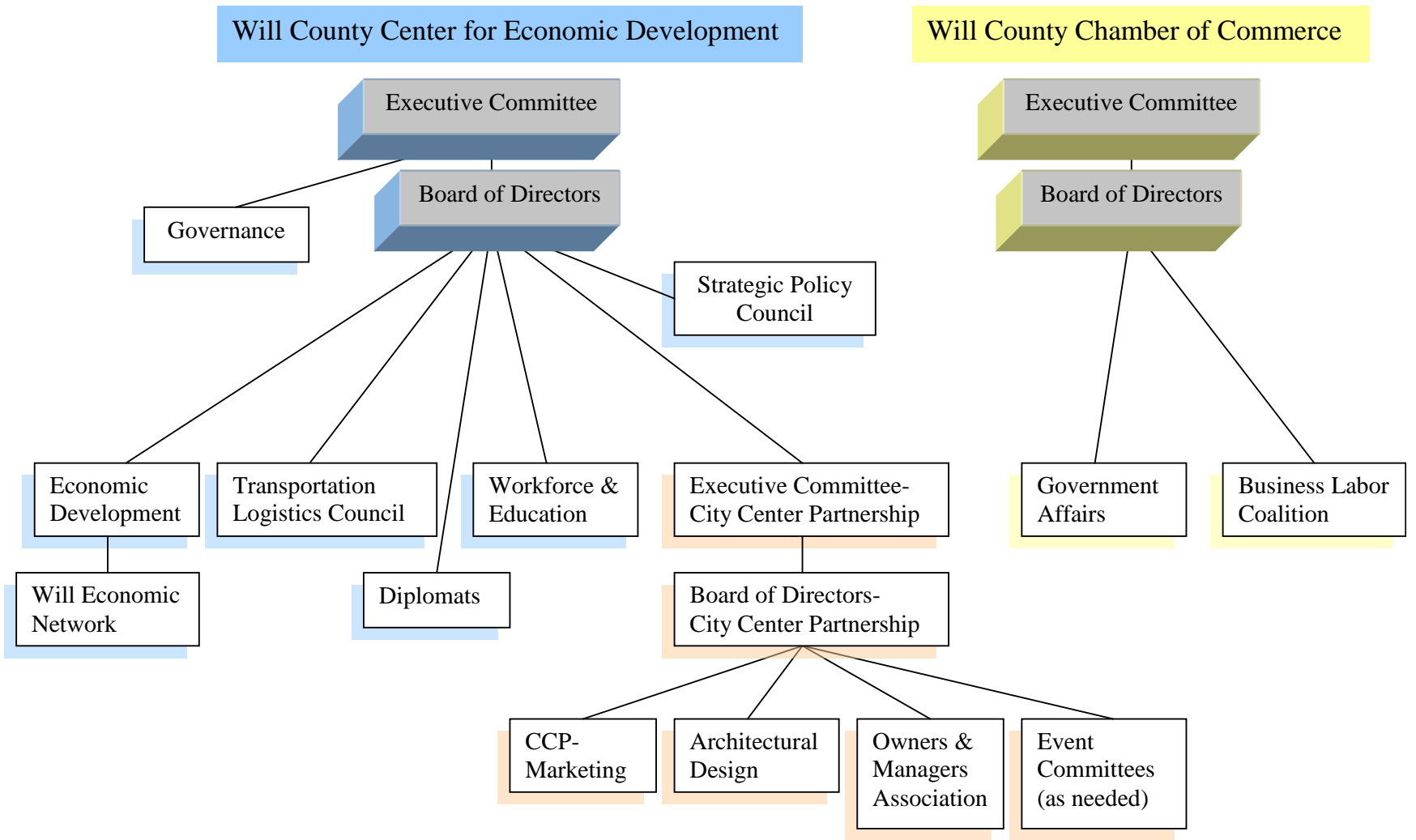
- **Created Southern Alliance For Extension (SAFE), a grassroots advocacy group to push completion of the stalled southern extension of I-355.**
  - **Leveraged the state-of-the-art intermodal operation at Elwood to begin branding Will County as the world's next Global TransCenter.**
  - **CED named one of the top 20 economic development groups in the U.S. by Site Selection magazine.**
- 

# CED Organization, Management and Funding

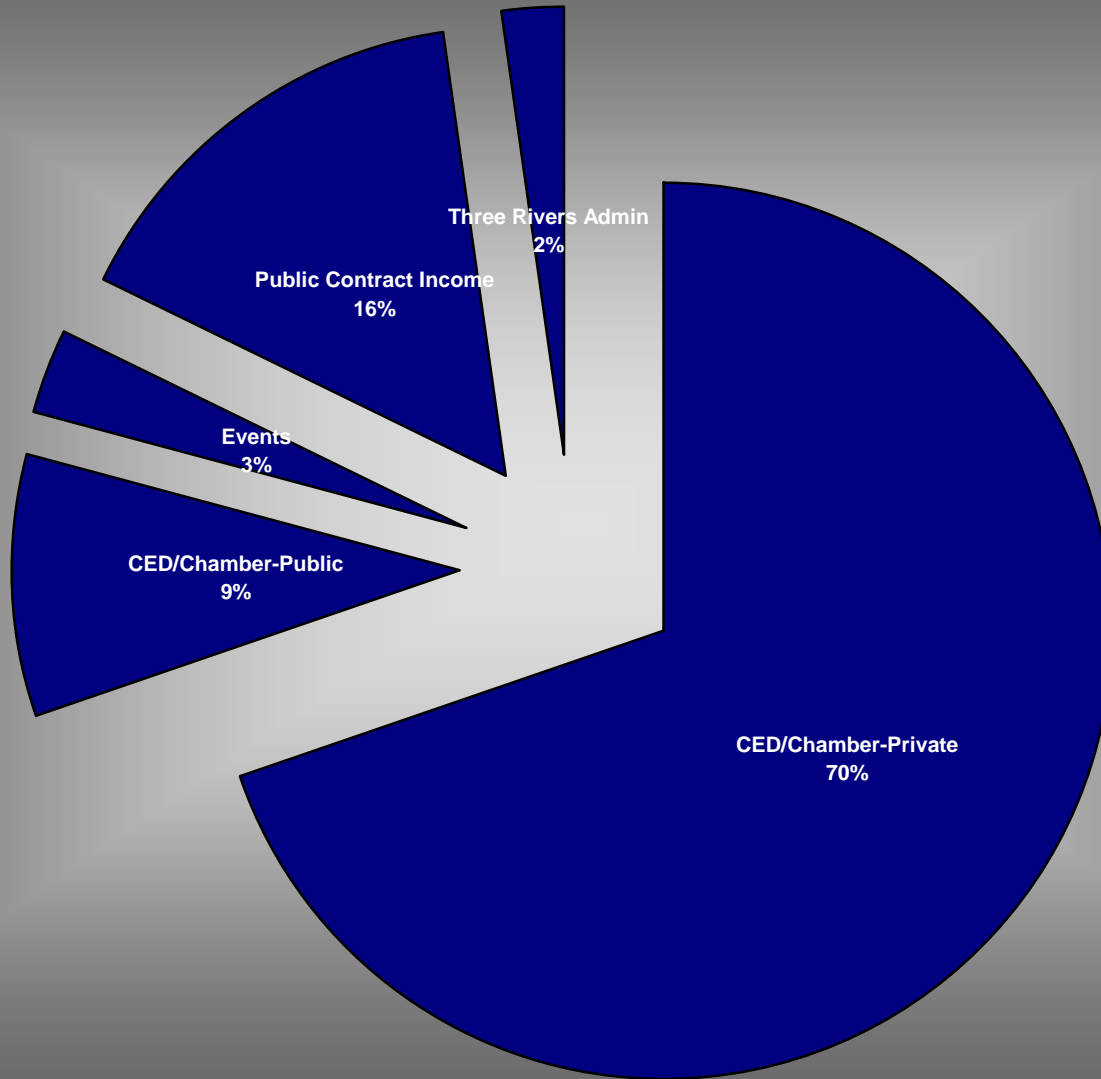
# Will County Center for Economic Development Organizational Chart for Affiliations



# Will County Center for Economic Development & Will County Chamber of Commerce Organizational Chart for Committees



# 2009 Will County CED/Chamber Revenue



# 2009 CED Program of Work: The Big Items

- ***Attracting political and financial support to maintain and expand our local, county and interstate road network for the efficient movement of goods and people throughout the County and encourage business growth (The Will County Transportation Blueprint)***
- ***Publishing the Will County Inland Port Impact Study which will assist the CED and out communities to maximize the public and private sector benefits of being the largest Inland Port in North America;***
- ***Recalibration of our Target Industry Marketing Program, reflecting the realities of the fast-changing global economy;***
- ***Focus on the recruitment of a Fortune 1000 Corporate Headquarters.***



## *The 2009 Program of Work*

### Economic Development Committee

- ✓ *Update of the 2007 Targeted Industry & Workforce Analysis Study*
  - ✓ *Will County Inland Port Impact Study*
  - ✓ *Annual Will County Business Retention Survey of Major Employers*
  - ✓ *WEN luncheon series*
  - ✓ *Chicago Metropolitan Agency for Planning (CMAP):*
- 

## ***The 2009 Program of Work***

### **Transportation Logistics Council**

- ✓ ***Monthly meetings with focus on industry trends, innovative practices and networking***
- ✓ ***Host Third Annual Global Logistics Summit***
- ✓ ***Co-Sponsor Will County Total Modal Tour***

## ***The 2009 Program of Work***


### **Workforce & Education Committee**

- ✓ ***Develop and implement the Will County Cares initiative working with the Strategic Policy Council***
- ✓ ***In conjunction with the Three Rivers Educational Partnership (TREP) and TRMA Develop and Implement the Dream !t Do ! Will County Program***
- ✓ ***Further develop the Workforce and Education component of the Target Industry & Workforce Analysis Study to support the Target Industry Marketing Program***



## ***The 2009 Program of Work***

### **Government Affairs Committee**


- ✓ ***Federal Stimulus Plan: Identify Stimulus-eligible Will County projects and lobby for maximum funding***
  - ✓ ***State Capital Bill: Support a Capital Bill with full funding. Identify and lobby for funding of Will County Transportation Blueprint infrastructure projects***
  - ✓ ***Federal Transportation Funding Reauthorization***
  - ✓ ***South Suburban Airport: Working with the Business Labor Coalition, work to pass the Will County Airport Authority legislation in Springfield.***
- 

## *The 2009 Program of Work*

### **Strategic Policy Council**

- ✓ *Update the Will County Transportation Blueprint in preparation for the State Capital Bill and the 2009 Federal Transportation Authorization Bill*
  - ✓ *Continued development and implementation of the Dream !t Do !t Career Awareness Campaign*
  - ✓ *Development of a long term innovative technology and international economic development program*
- 

## ***Assisting Will County Communities – How Can We Help?***

- **Economic Development Strategy Assistance**
  - **Information for Successful Economic Development**
  - **Prospect Referral & Management Assistance**
  - **Business Retention Programs**
  - **Working with State Agencies (DCEO, IDOT, IEPA, etc.)**
  - **Incentive Packages**
  - **State and Federal Program Assistance**
  - **Public Infrastructure Support**
- 

# Elected Official Briefing Briefing

**Questions?**

